

NuActor[®]

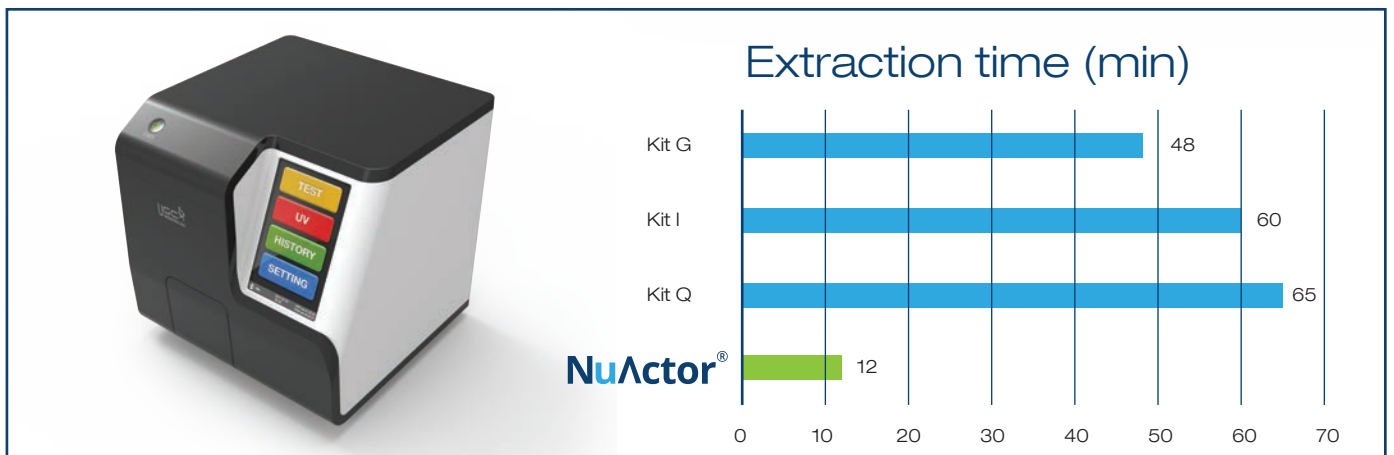
Nucleic acid extractor

- Extraction time : < 12 mins
- Exclusive cartridge system
- Magnetic bead method
- Fully Automated
- UV sterilization
- Size : 24 cm × 24 cm × 26 cm



Time Saving & Easy Operation

- RNA extraction Comparison with manual kits



- Workflow of sample preparation



1 Peel off the sealing film



2 Add 200 µL of sample



3 Place at NuActor bay



4 Select item and START

Exclusive for **NuActor**[®]

DNA / RNA Extraction Cartridges



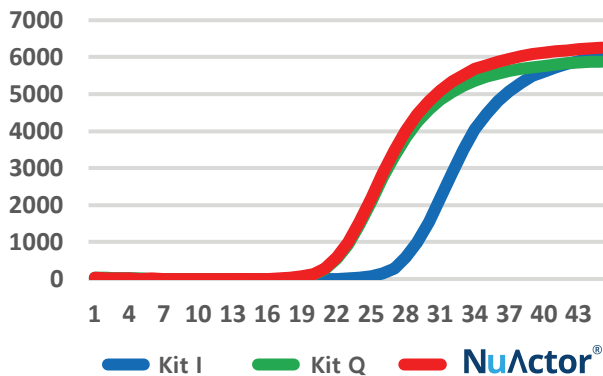
- Reagent-ready Cartridge
- Sample type :
Serum/plasma, Cultured cells,
Animal tissues(pretreated)
Plant tissues(coming soon)
- Room Temperature Storage
- 8 extraction/run in < 12 mins
- 200 μ L sample to 100 μ L elution

Extraction comparison with manual kits

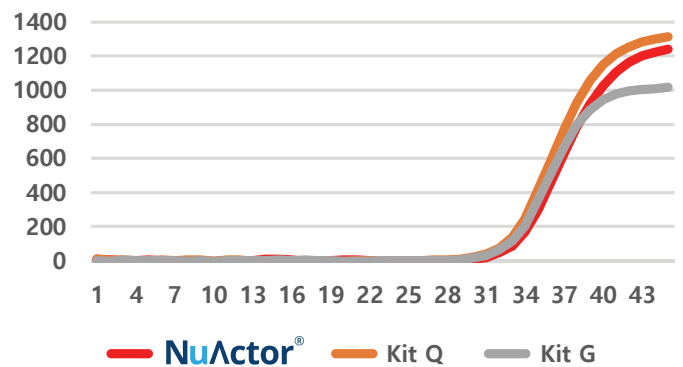
DNA : standard control serum
by SeraCare (2.4×10^6 IU/ml)

RNA : standard control serum
by SeraCare (2.4×10^4 IU/ml)

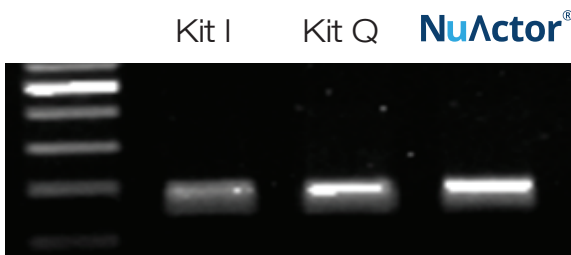
Amplification Curve



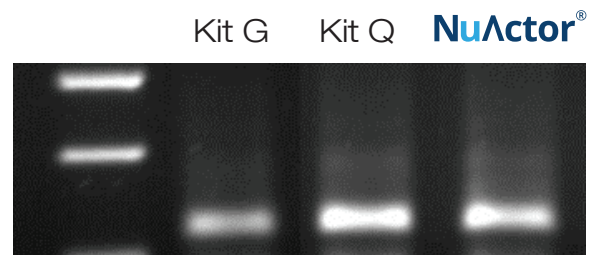
Amplification Curve



o Agarose gel electrophoresis



1.5% agarose gel



1.5% agarose gel